

THE DRIVESAVER uses polyurethane, a stiff, yet resilient elastomer, has excellent energy absorbing properties. It will retain its design characteristics over a long period of time and will return to original shape even after being under compression. It withstands oil, gasoline, sludge, saltwater and a temperature range of -65 degrees F to +225 degrees F. All metal components and hardware are plated for corrosion resistance and long life. Model 5756 and 7256 may be used between flanges with a bolt hole size larger than the bolts furnished with THE DRIVESAVER. Specify model number plus the suffix "B". Bushings to fit the flange will be furnished with THE DRIVESAVER.

ORDER#/ Drivesaver Model	Flange Diameter	Num. of Bolts	Bolt Dia.	Bolt Circle	Pilot Dia.	Coupling Diameter	Coupling Thickness	Torque Rating Ft.Lbs.	Plus Rated Ft.Lbs.	List Price	+Rated List Price
303	3	3	3/8	2 1/2	1 3/4	4	1 1/16	225		141.00	
353	3 1/2	3	3/8	2 3/4	1 7/8	4 5/16	1 1/16	250		141.00	
354	3 1/2	4	8mm	2 15/16	1 9/16	4 1/4	1	300		162.00	
404	4	4	3/8	3 1/4	2	5	1	550		175.00	
404A	4	4	3/8	3 1/4	2 1/2	5	1	550		175.00	
404AC	4	4	3/8	3 1/4	2 5/8	5	1	550		175.00	
404V	4	4	10mm	8cm	6cm	5	1	550		175.00	
404S	4	4	3/8	9cm	6cm	5 1/4	1	550		175.00	
424Y	100mm	4	7/16	78mm	50mm	4 1/4	1	550		182.00	
454	4 1/2	4	3/8	3 3/4	2 5/8	5 3/8	1	570		182.00	
4756	4 3/4	6	7/16	3 7/8	2 1/2	6	1	675	1600	251.00	272.00
504	5	4	7/16	4 1/4	2 1/2	6	1	675	1600	209.00	227.00
504A	5	4	3/8	4 1/8	2 3/4	6	1	675		209.00	
504AC	5	4	7/16	4 1/8	2 7/8	6	1	675		209.00	
524Y	120mm	4	10mm	100mm	65mm	5 1/4	1	675		210.00	
554	5 1/2	4	3/8	4 5/8	3 1/8	6 1/2	1	720		210.00	
5756	5 3/4	6	1/2	4 3/4	3	6 13/16	1 1/8	1800	3000	265.00	286.00
5756A	5 3/4	6	1/2	4 3/4	3	6 3/8	1 1/8	1800	3000	265.00	286.00
6256	6 1/4	6	7/16	5 3/8	3 1/4	7 1/4	1 1/16	1900		277.00	295.00
7256	7 1/4	6	5/8	6	3 3/4	8 3/8	1 3/16	3200	4400	335.00	367.00
7306	7 1/4	6	5/8	6	3 3/4	7 1/4	1 3/16	2200	3200	572.00	
8078	8 1/16	8	5/8	6 11/16	5 1/2	8 1/16	1 3/4	3300	4800	598.00	

To determine Torque Rating Please use the following formula:  
(Engine Horsepower X 5252 X Reduction Ratio) / Engine RPM

Bushing and Washer Sets  
Available for the following parts.

**Tolerances:**

Female Pilot +0.00 Male Pilot +0.10  
.010 .000

Other Dimensions: ±1/64"

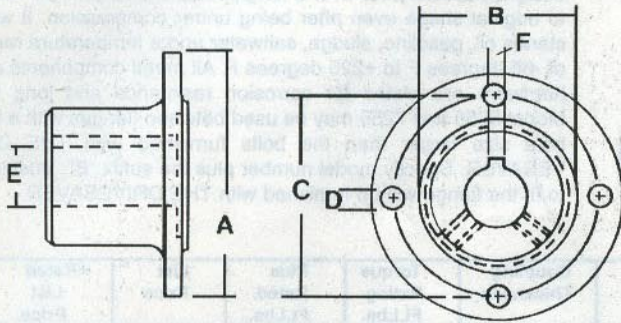
**ORDER# LIST (E)**

5756 B 15.00  
5756A B 15.00  
7256 B 18.90

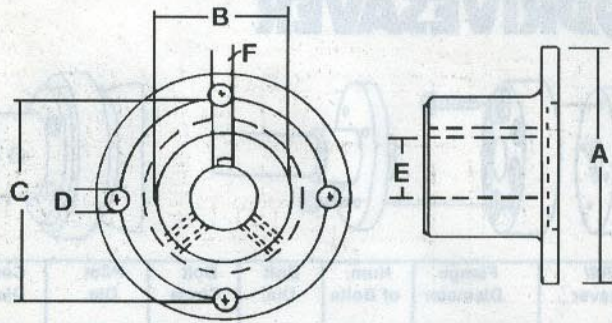
Selection Guide	REDUCTION	ORDER#	MODEL	REDUCTION	ORDER#	MODEL	REDUCTION	ORDER#
<b>ALLISON</b>			PRM60,7.25 PRM601,601A		7256	MG5111DC,510	4.0,5.1	1058B
M		7256	PRM602,602S 5.75	1.19,1.5,2.0,2.8	5756	MG516		1108
MH		908B	<b>PARAGON</b>			MG518-1DC		1108A
HYHHP7700(9.00)		908A	HF,HB,RO		404	MG5111(9" FLANGE)		908BB
<b>CAPITOL</b>			P200,P300,P13,PV300		404AC	MG5111(10 1/2" FLANGE)		1058B
5HD,200		4756	RA,PV400		454	<b>UNIVERSAL</b>		
10200, 11200		5756A	P400		504A	ATOMIC 4		353
10700, 11700		7256	PM,PMB,PLP15		504AC	<b>VOLVO</b>		
HP500, HP6900		7256	RB		554	MB10A,MD38,MD7A,MD11C		404V
HP7700,HP9400,HP28000		1108	RC		6256	MS,MS3,MS4,A		504
HY6900,HY22000,4HE-10700		7256	<b>SAAB</b>			<b>WARNER</b>		
HY7700,HY28000		1108	G,H		354	71C,INLINE,DIRECT DRIVE,500,		
M105,M125,2HE/4HE-10200		5756	HG,2HG,GG,2H,2GRG		404S	1000,1500,70C,1017,1029,2301		404A
2HE/4HE-11200		5756	<b>LOHMANN/STALTER</b>			71C,72C,INLINE,DROP		
<b>CRUSADER</b>			GVV200A		908AC	CENTER/V DRIVE,5000,1004,		
V Drive 4500		404A	<b>TWIN DISC</b>			1005,1013,1014,1017,1018,2001		504
<b>HURTH</b>			MG-502-1,MG-502		4756	73C,1006,1026,7000		5756
HBW5,10,20,50,100,125			MG5050,5050A,505V	1.1,1.5,2.0		<b>YANMAR</b>		
404A,HBW150,150A,150V,220			5061,5061A5061V	2.5,3.0	5756B	20M,20H/G		424Y
250,150V		404A	MG506,506-1,506A	1.1,1.5,2.0,2.5,3.0	5756B	30M,30H/G		524Y
HSW360,400,450		504	MG507-1,507A-1507-2,507A	1.1,1.5,2.0	5756B	<b>ZF</b>		
HSW600,630,630A,630H		504	MG506,MG506-1,506A	4.0,4.5	7256B	IRM41A2,41A3,504A,50A3,V2,V3		504
630V		504	MG507-1,507A	2.5,3.0	7256B	IRM301A-1,30192-2		5756A
HSW800A,800V		5756	MG509	1.5,2.0,3.0	7256B	IRM310		7306Z
<b>NEWAGE</b>			MG5091SC7256B,			IRM350		8078Z
PRM DELTA		404A	MG5111SC,MG510	1.5,2.0,2.5,3.0	908B	IRM2201,V,225A		4756I
PRM210/160		504	MG510A	1.5,2.0,2.5	908B	IRM320		1058B
			MG5114CHP,51011DC			IRM220A-1		6068Z
			509,510	4.0,4.5	1058B			

# SHAFT COUPLERS

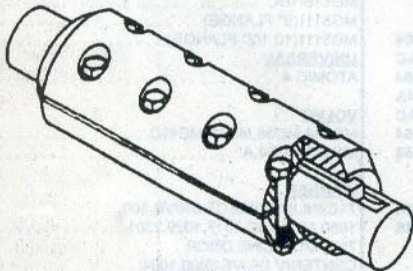
## Male Pilot Couplings



## Female Pilot Couplings



Male								Female							
Order No.	A Flange Dia.	B Pilot Dia.	C Bolt Circle	D Bolt Size	E Shaft Size	F Kywy Size	LIST	Order No.	A Flange Dia.	B Pilot Dia.	C Bolt Circle	D Bolt Size	E Shaft Size	F Kywy Size	LIST
<b>Warner Hirth &amp; ZF</b>															
40002	4"	2 1/2"	3 1/4"	3/8"	1"	1/4"	45.00	40075	4 3/4"	2 1/2"	3 7/8"	7/16"	1"	1/4"	92.00
40003	4"	2 1/2"	3 1/4"	3/8"	1 1/8"	1/4"	45.00	40076	4 3/4"	2 1/2"	3 7/8"	7/16"	1 7/8"	1/4"	92.00
40004	4"	2 1/2"	3 1/4"	3/8"	1 1/4"	5/16"	45.00	40077	4 3/4"	2 1/2"	3 7/8"	7/16"	1 1/4"	5/16"	92.00
40005	4"	2 1/2"	3 1/4"	3/8"	1 3/8"	5/16"	45.00	40078	4 3/4"	2 1/2"	3 7/8"	7/16"	1 3/8"	5/16"	92.00
40006	4"	2 1/2"	3 1/4"	3/8"	1 1/2"	3/8"	45.00	40079	4 3/4"	2 1/2"	3 7/8"	7/16"	1 1/2"	3/8"	92.00
40010	5"	2 1/2"	4 1/4"	7/16"	1"	1/4"	64.00	40080	4 3/4"	2 1/2"	3 7/8"	7/16"	1 3/4"	7/16"	92.00
40011	5"	2 1/2"	4 1/4"	7/16"	1 1/8"	1/4"	64.00	40081	4 3/4"	2 1/2"	3 7/8"	7/16"	2"	1/2"	92.00
40012	5"	2 1/2"	4 1/4"	7/16"	1 1/4"	5/16"	64.00	40082	5 3/4"	3"	4 3/4"	1/2"	1"	1/4"	120.00
40013	5"	2 1/2"	4 1/4"	7/16"	1 3/8"	5/16"	64.00	40083	5 3/4"	3"	4 3/4"	1/2"	1 1/8"	1/4"	120.00
40014	5"	2 1/2"	4 1/4"	7/16"	1 1/2"	3/8"	64.00	40084	5 3/4"	3"	4 3/4"	1/2"	1 3/4"	7/16"	120.00
40015	5"	2 1/2"	4 1/4"	7/16"	1 3/4"	7/16"	64.00	40085	5 3/4"	3"	4 3/4"	1/2"	1 3/8"	5/16"	120.00
40016	5"	2 1/2"	4 1/4"	7/16"	2"	1/2"	64.00	40086	5 3/4"	3"	4 3/4"	1/2"	1 1/2"	3/8"	120.00
<b>Paragon</b>															
40027	4"	2"	3 1/4"	3/8"	1"	1/4"	49.00	40087	5 3/4"	3"	4 3/4"	1/2"	1 3/4"	7/16"	120.00
40029	4"	2"	3 1/4"	3/8"	1 1/4"	5/16"	49.00	40088	5 3/4"	3"	4 3/4"	1/2"	2"	1/2"	120.00
40030	4"	2"	3 1/4"	3/8"	1 3/8"	5/16"	49.00	40090	7 1/4"	3 3/4"	6"	5/8"	1 1/4"	5/16"	232.00
40062	4"	2 5/8"	3 1/4"	3/8"	1"	1/4"	49.00	40091	7 1/4"	3 3/4"	6"	5/8"	1 3/8"	5/16"	232.00
40064	4"	2 5/8"	3 1/4"	3/8"	1 1/4"	5/16"	49.00	40092	7 1/4"	3 3/4"	6"	5/8"	1 1/2"	3/8"	232.00
40065	4"	2 5/8"	3 1/4"	3/8"	1 3/8"	5/16"	49.00	40093	7 1/4"	3 3/4"	6"	5/8"	1 3/4"	7/16"	232.00
40067	5"	2 1/4"	4 1/8"	3/8"	1"	1/4"	75.00	40094	7 1/4"	3 3/4"	6"	5/8"	2"	1/2"	232.00
40069	5"	2 1/4"	4 1/8"	3/8"	1 1/4"	5/16"	75.00	40095	9"	6"	7 1/2"	3/4"	1 1/2"	3/8"	410.00
40071	5"	2 3/4"	4 1/8"	3/8"	1"	1/4"	75.00	40096	9"	6"	7 1/2"	3/4"	13/4"	7/16"	410.00
40072	5"	2 3/4"	4 1/8"	3/8"	1 1/4"	5/16"	75.00	40097	9"	6"	7 1/2"	3/4"	2"	1/2"	410.00
								40098	9"	6"	7 1/2"	3/4"	2 1/4"	1/2"	410.00



### STUB SHAFT COUPLERS

SIZE	LIST (D)
1 1/2"	495.00
1 3/4"	625.00
2"	699.00
2 1/2"	857.00
3"	1685.00

\*\* Larger sizes available up to 6".

1. Damaged stub shaft can be replaced without replacing main shaft.
2. All couplers are jig located to provide complete interchangeability for new construction.
3. Smooth cylindrical contour creates minimum turbulence.
4. Each individual half is precision bored after all machining stresses have been relieved.
5. Random torqueing of bolts does not affect alignment.
6. Machined from solid cold drawn naval brass bar stock.
7. A 1/2" stainless key runs full length of coupling to carry the torque.
8. Hatteras compatible.
9. All bolts, nuts, and key come furnished.

### STAINLESS STEEL TIE WIRE

For coupling set screws.  
(1 Lb. spool)

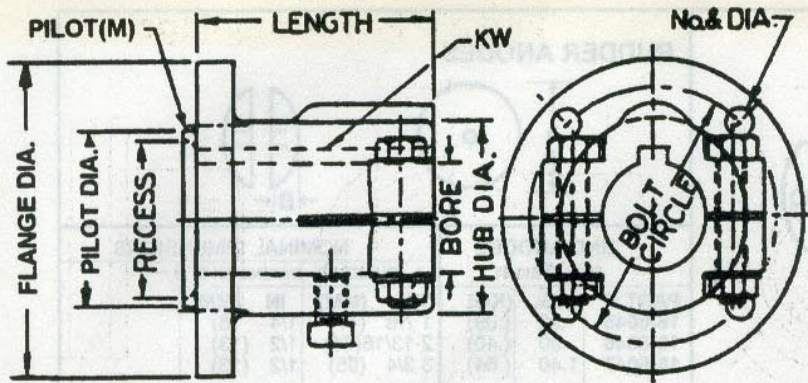
ORDER#	LIST/SPOOL (F)
88-015	10.00

### SQUARE HEAD COUPLING SET SCREWS

Drilled and heat treated.

ORDER#	SIZE	LIST (F)
88-010	3/8 - 16	2.00
88-011	7/16 - 14	2.50
88-012	1/2 - 13	3.00

# CLAMP FIT SHAFT COUPLERS



BORES	KEYWAY
1/2 - 1 1/16"	1/8 x 1/16"
3/4 - 3/16"	3/16 x 3/32"
7/8 - 1 3/16"	1/4 x 1/8"
1 1/4 - 1 7/16"	5/16 x 5/32"
1 1/2 - 1 11/16"	3/8 x 3/16"
1 3/4 - 1 15/16"	7/16 x 7/32"
2 - 2 3/16"	1/2 x 1/4"
2 1/4 - 2 7/16"	9/16 x 9/32"
2 1/2 - 2 15/16"	5/8 x 5/16"
3 - 3 7/16"	3/4 x 3/8"
3-1/2 - 3 15/16"	7/8 x 7/16"
4 - 4 7/16"	1 x 1/2"

Custom flanges can be manufactured on request - please call for details. Prices are subject to change; invoice price will be price prevailing at time of shipment.

## PILOT RINGS

Used to mate two SAE flanges (changes one female pilot to male pilot.)

SAE #2	24.00
SAE #3	28.00
SAE #4	38.00

(for 9" AA & 9" BA)

Flange Dia./ Order#	Bolt Dia & Number	Bolt Circle	Pilot Dia. Male or Female	Total Length	Hub Dia.	Cast Pilot Hole	Bore Range	Recess	Transmission	Notes	LIST (E)	Coupling Bolt Set
4"AS	3/8"(4)	3 1/4"	2x3/32"M	2"	2"	5/8"	3/4 - 1 1/4"	1 3/4x3/16"	P	-	89.00	6.50
4"BS	3/8"(4)	3 1/4"	2 1/2x3/32"M	2"	2"	5/8"	3/4 - 1 1/4"	2 1/16x3/16"	W,H,Z	-	83.00	6.50
4"CS	3/8"(4)	3 1/4"	2 5/8x3/32"M	2"	2"	5/8"	3/4 - 1 1/4"	2 1/4x3/16"	P	-	85.00	6.50
4"YS	10mm(4)	78mm	50mmX3/32"M	2"	2"	5/8"	3/4 - 1 1/4"	1 7/16x5/8"	Y	-	86.00	-
4"A	3/8"(4)	3 1/4"	2x3/32"M	3 1/4"	2 1/2"	3/4"	1 - 1 1/2"	1 3/4x3/16"	P	-	93.00	6.50
4"B	3/8"(4)	3 1/4"	2 1/2x3/32"M	3 1/4"	2 1/2"	3/4"	1 - 1 1/2"	2 1/16x3/16"	W,H,Z	-	93.00	6.50
4"C	3/8"(4)	3 1/4"	2 5/8x3/32"M	3 1/4"	2 1/2"	3/4"	1 - 1 1/2"	2 1/4x3/16"	P	-	85.00	6.50
4-3/4"A(SAE2)	7/16"(6)	3 7/8"	2 1/2x3/16"F	3 5/16"	2 1/2"	3/4"	1 - 1 1/2"	-	T,C,Z	6	96.00	10.50
4-3/4"B(SAE2)	7/16"(6)	3 7/8"	2 1/2x3/16"F	3 3/4"	3"	1 1/4"	1 5/8 - 2"	-	T,C,Z	6	96.00	10.50
5"A	7/16"(4)	4 1/4"	2 1/2x3/32"M	3 5/16"	2 1/2"	3/4"	1 - 1 1/2"	2 1/16x11/32"	W,H,Z	1,6	93.00	7.50
5"B	3/8"(4)	4 1/8"	2 3/4x3/32"M	3 5/16"	2 1/2"	3/4"	1 - 1 1/2"	2 7/16x7/16"	P	-	96.00	10.25
5"C	7/16"(4)	4 1/4"	2 1/2x3/32"M	3 3/4"	3"	1 1/4"	1 5/8 - 2"	2 1/16x11/32"	W,H,Z	1,6	96.00	7.00
5"D	3/8"(4)	4 1/8"	2 3/4x3/32"M	3 3/4"	3"	1 1/4"	1 5/8 - 2"	2 7/16x7/16"	P	-	96.00	10.25
5"YA	7/16"(4)	4 1/4"	2 1/2x3/32"M	3 5/16"	2 1/2"	3/4"	1 - 1 1/2"	2 1/4x9/16"	Y	-	113.00	7.50
5-3/4"A(SAE3)	1/2"(6)	4 3/4"	3x3/16"F	4 1/2"	3"	7/8"	1 1/4 - 1 3/4"	-	W,T,C,A,Z	2	133.00	15.25
5-3/4"B(SAE3)	1/2"(6)	4 3/4"	3x3/16"F	4 1/2"	3 5/8"	1 1/2"	2 - 2 1/4"	-	W,T,C,A,Z	2	150.00	15.25
7-1/4"A(SAE4)	5/8"(6)	6"	3 3/4x3/16"F	4 1/4"	3 1/4"	1"	1 1/4 - 1 3/4"	-	T,C,A	3	239.00	25.25
7-1/4"B(SAE4)	5/8"(6)	6"	3 3/4x3/16"F	5"	4 3/8"	1 3/4"	2 - 2 3/4"	-	T,C,A	3	267.00	25.25
7-1/4"BC	5/8"(8)	6"	3 3/4x3/16"F	5"	4 3/8"	1 3/4"	2 - 2 3/4"	-	Z	-	267.00	31.50
8"AA	5/8"(8)	171mm	140mmx9/32"F	5"	4 7/8"	1 1/4"	1 1/2 - 2 3/4"	-	Z	-	398.00	-
8"AB	18mm	170mm	140mmx9/32"F	5"	4 7/8"	1 1/4"	1 1/2 - 2 3/4"	-	Z	-	398.00	-
9"AA	3/4"(6)	7 1/2"	4 3/4x9/32"F	5"	4 7/8"	1 1/4"	1 1/2 - 2 3/4"	-	T	-	428.00	27.00
9"AB	3/4"(8)	7 1/2"	6x7/32"F	5"	4 7/8"	1 1/4"	1 1/2 - 2 3/4"	-	T,A	4	398.00	35.50
9"AC	5/8"(8)	7 3/4"	5 1/8x7/32"F	5"	4 7/8"	1 1/4"	1 1/2 - 2 3/4"	4x1 1/4"	C	-	428.00	35.00
9"AD	5/8"(8)	196mm	140mmx9/32"F	5"	4 7/8"	1 1/4"	1 1/2 - 2 3/4"	-	Z	-	438.00	-
9"BA	3/4"(6)	7 1/2"	4 3/4x9/32"F	6 1/4"	5 7/8"	2 1/2"	3 - 4"	-	T	5	520.00	30.00
9"BB	3/4"(8)	7 1/2"	6x7/32"F	6 1/4"	5 7/8"	2 1/2"	3 - 4"	-	T,A	4,5	520.00	40.00
9"BC	5/8"(8)	7 3/4"	5-1/8x7/32"F	6 1/4"	5 7/8"	2 1/2"	3 - 4"	4x1 1/4"	C	5	520.00	36.75
10-1/2"A	1"(8)	8 3/4"	5x9/32"F	6"	4-5/8"	1 3/4"	2 - 2 3/4"	-	T	-	516.00	60.00
10-1/2"B	1"(8)	8 3/4"	5x9/32"F	6 1/2"	5 7/8"	2 1/4"	3 - 4"	-	T	5	516.00	60.00

Transmission Key: A= Allison, C= Capitol, H= Hurth, P= Paragon, T= Twin Disc, Y= Yanmar, W= Warner, Z= ZF

Notes:

1= For Hurth HBW-400 & HBW-600, 8 holes required. 4= For Twin Disc, drill holes for 7/8" bolts.

2= For Twin Disc & ZF, drill holes for 5/8" bolts.

5= Couplings with 4" bore have 1 x 3/8" keyway, use 1 x 7/8" key.

3= For Twin Disc, drill holes for 3/4" bolts.

6= For ZF, drill holes for 12mm bolts.